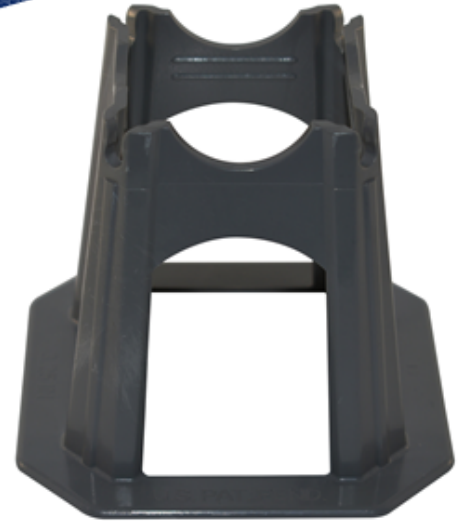


# PAC CHAIR 3

By ECO DESIGN WORKS



## PRODUCT DETAILS

### VERSATILE

- Stackable
- No Sand Plate Needed
- Rebar or Mesh Application

### ENGINEERED FOR STRENGTH

- High Load Capacity
- Optimal Surface Contact
- Max Aggregate Flow

### SIZES FOR EVERY PROJECT

- Two height combinations
- Eight height sizes from 1.5" to 5.00"
- Fits up to #8 rebar

## ABOUT ECO

- Started from a garage in 1971 as BUD / alan Plastics, Inc.
- Now one of the largest injection molding manufacturers in the Midwest.
- We are a dedicated supply chain partner for some of the premier companies in the world.

## INQUIRIES

Address: 3067 South Route 5  
Camdenton, MO 65020

Company: [EcoDesignWorks.com](http://EcoDesignWorks.com)  
Product: [RebarSupportUSA.com](http://RebarSupportUSA.com)

Marketing: Mark Malone  
(617) 999-2227